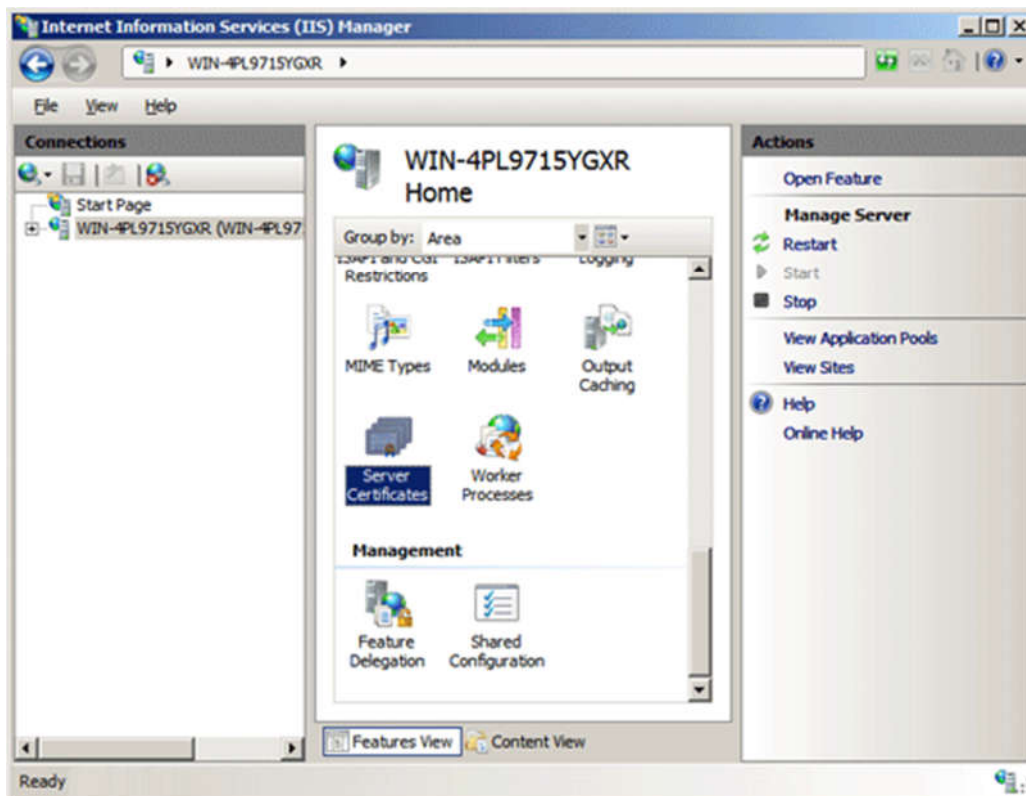


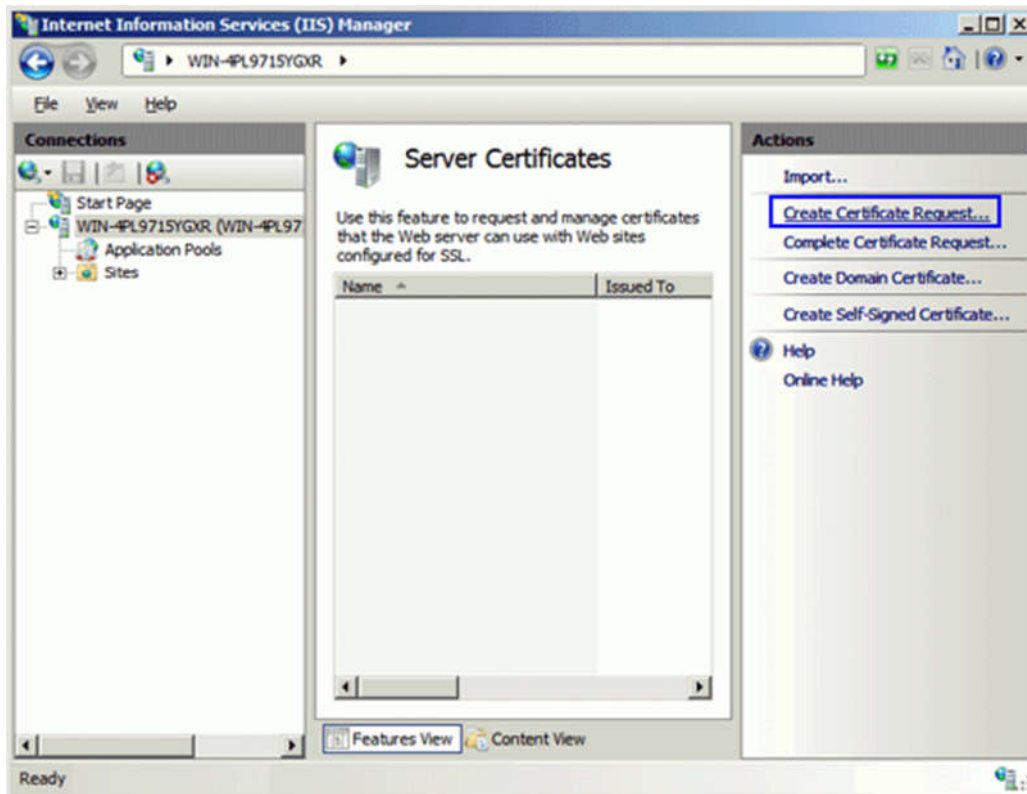
## IIS 7 CSR Creation and Installation

### How to generate a CSR in Microsoft IIS

1. Click Start, then Administrative Tools, then Internet Information Services (IIS) Manager.
2. Click on the server name.
3. From the center menu, double-click the "Server Certificates" button in the "Security" section (it is near the bottom of the menu).



4. Next, from the "Actions" menu (on the right), click on "Create Certificate Request." This will open the Request Certificate wizard.



5. In the "Distinguished Name Properties" window, enter the information as follows:

**Common Name** - The name through which the certificate will be accessed (usually the fully-qualified domain name, e.g., www.domain.com or mail.domain.com).

**Organization** - The legally registered name of your organization/company.


**Organizational unit** - The name of your department within the organization (frequently this entry will be listed as "IT," "Web Security," or is simply left blank).

**City/locality** - The city in which your organization is located.

**State/province** - The state in which your organization is located.

**Country/region** - If needed, you can find your country code [here](#).

**Request Certificate** [?] [X]

 **Distinguished Name Properties**

Specify the required information for the certificate. State/province and City/locality must be specified as official names and they cannot contain abbreviations.

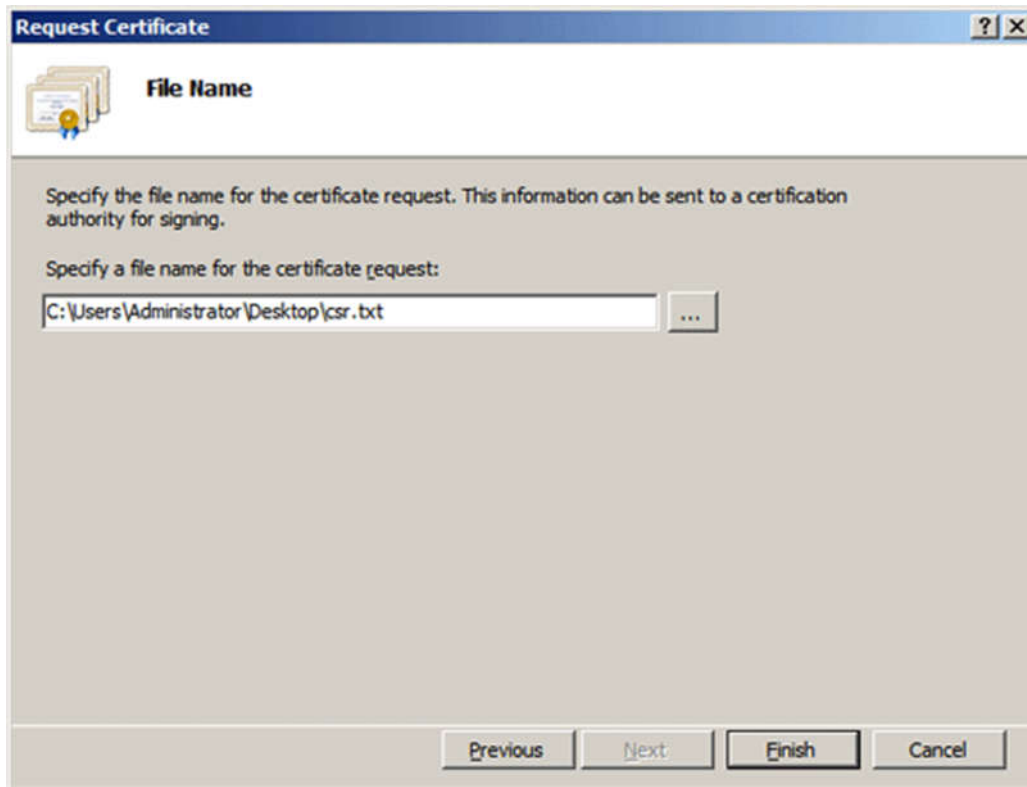
Common name:	<input type="text" value="www.yourdomain.com"/>
Organization:	<input type="text" value="Your Company, Inc."/>
Organizational unit:	<input type="text" value="IT"/>
City/locality	<input type="text" value="London"/>
State/province:	<input type="text" value="Utah"/>
Country/region:	<input type="text" value="US"/>

6. Click Next.
7. In the "Cryptographic Service Provider Properties" window, leave both settings at their defaults (Microsoft RSA SChannel and 2048) and then click next.



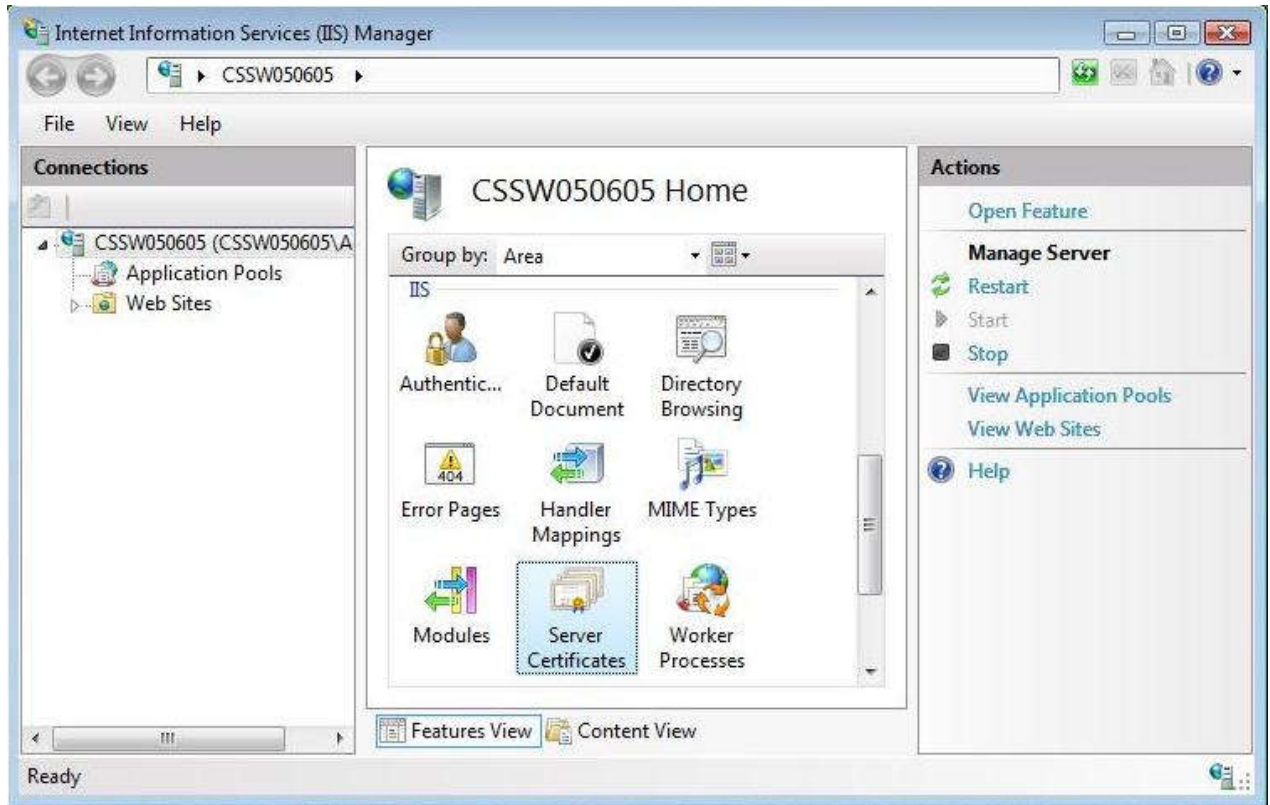
8. Enter a filename for your CSR file.

Remember the filename that you choose and the location to which you save it. Please [send us the CSR file](#) for our process.

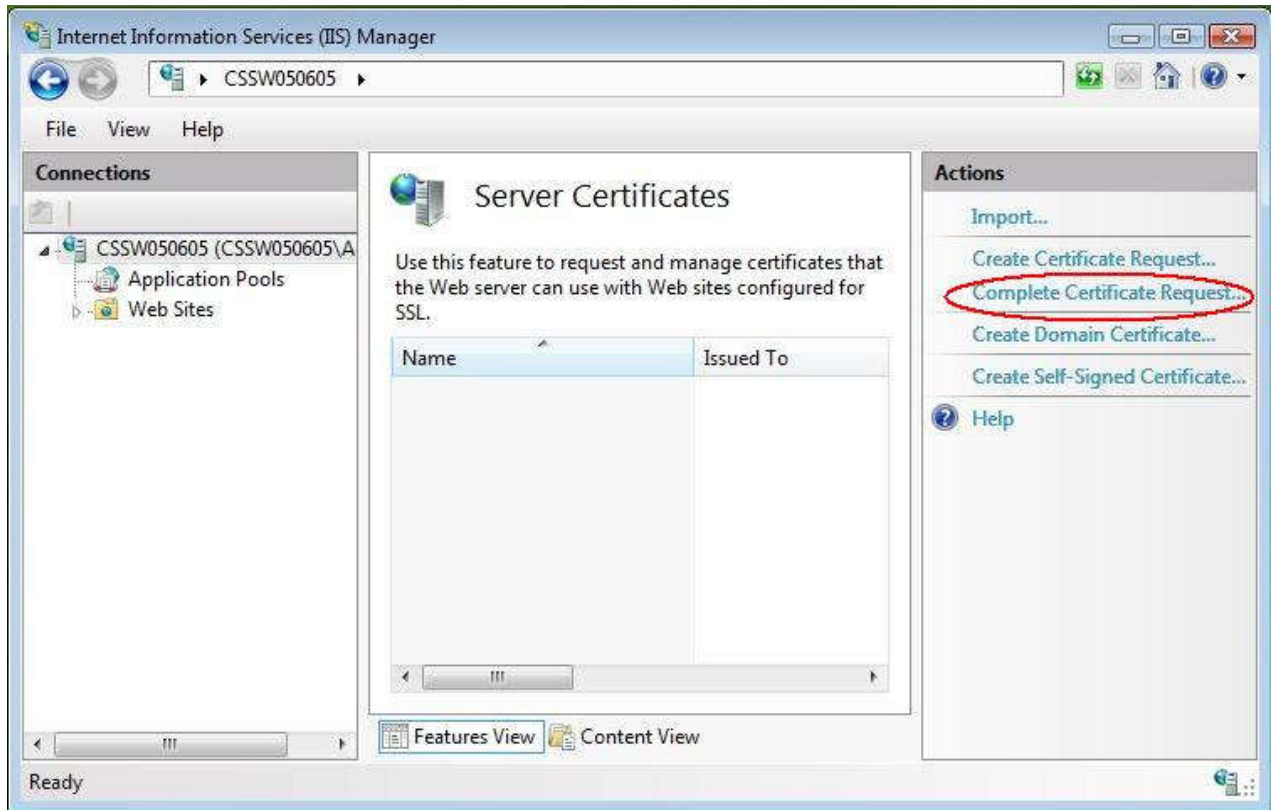


## How to install your SSL Certificate to your IIS 7

1. Open Internet Information Services Manager (IISM) to the appropriate Server  
Start -> Administrative Tools -> IISM -> Server Name
2. Open the Server Certificates icon.

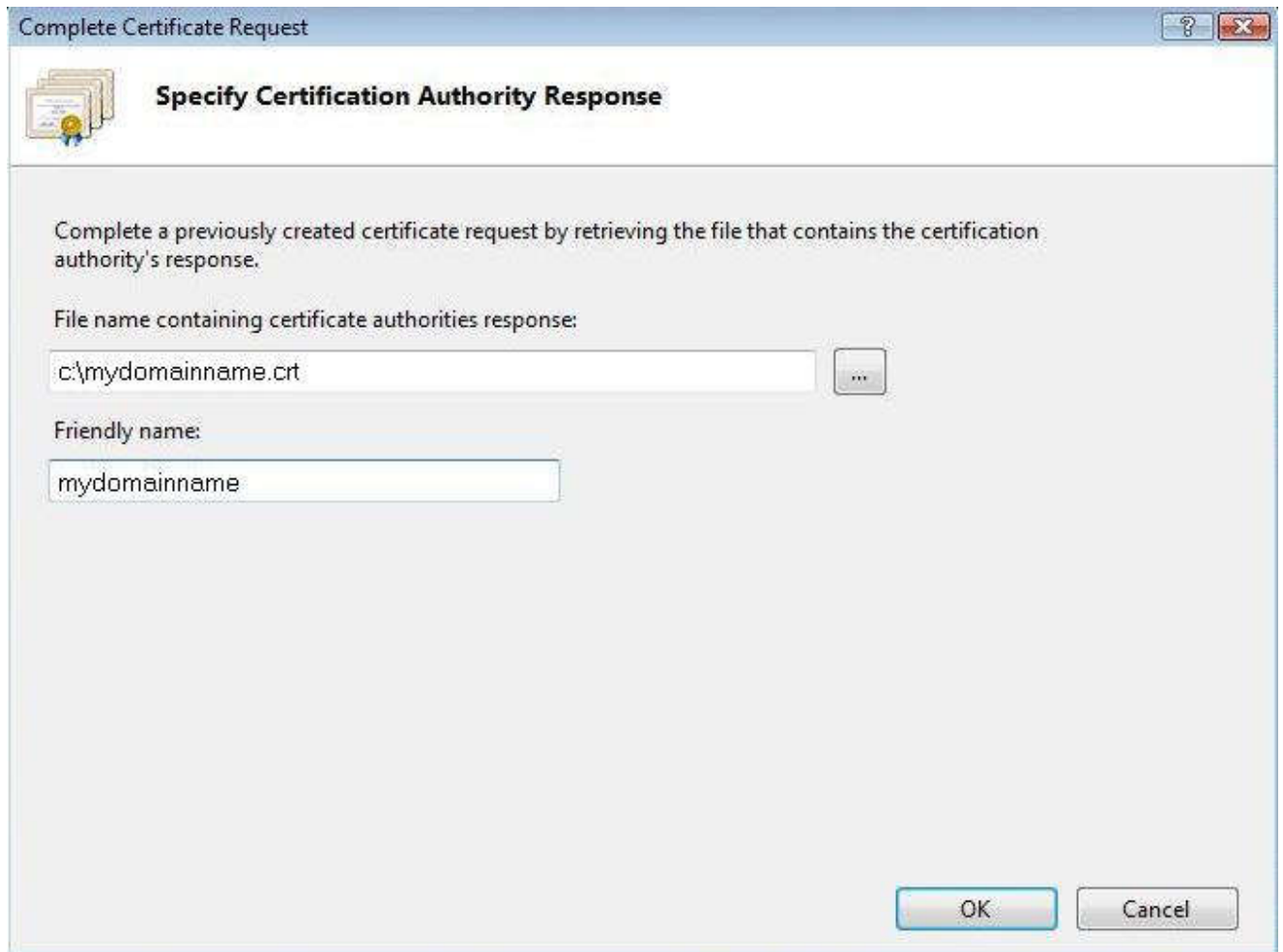


3. Open 'Complete Certificate Request' Wizard



From the 'Actions' Menu on the left select 'Complete Certificate Request'

4. Proceed to Complete Certificate Request' Wizard



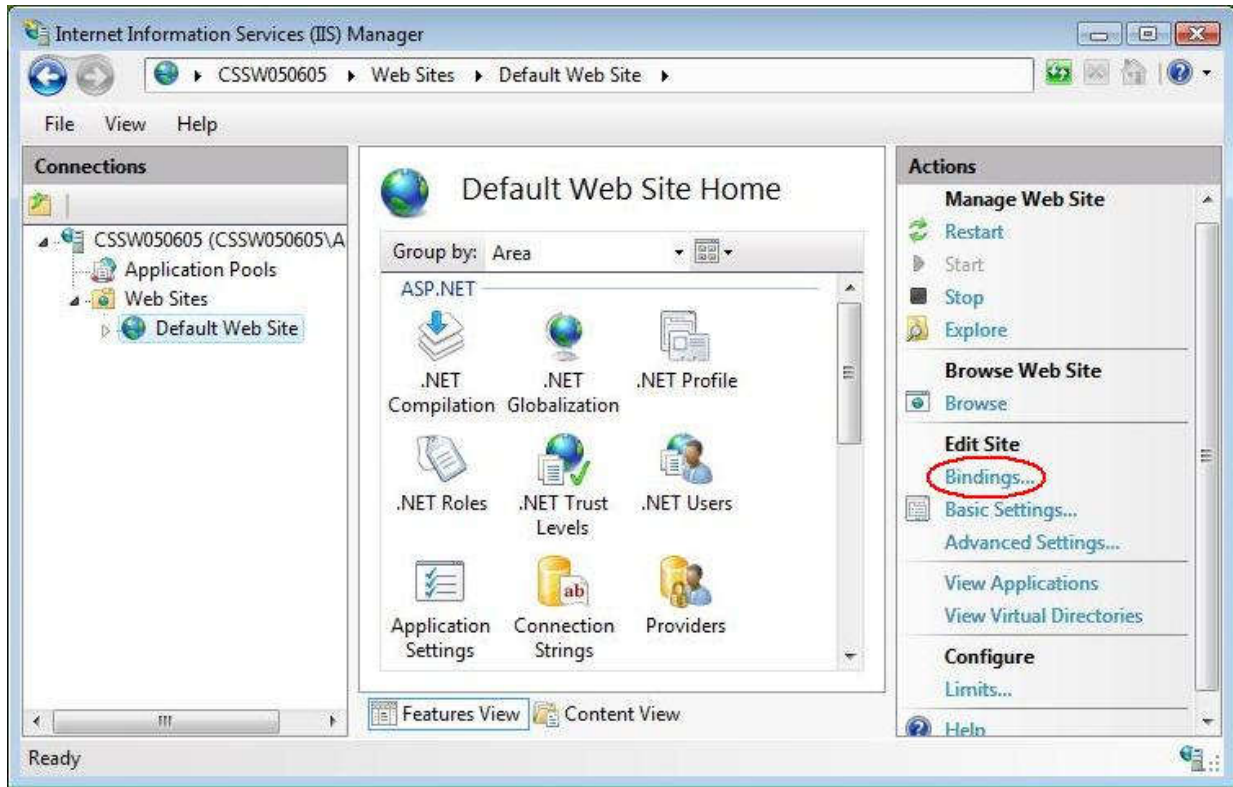
Fill out all appropriate information. You may need to browse to the location of the certificate or you may enter it in the provided box. The friendly is not part of the certificate itself, but is used by the server administrator to easily distinguish the certificate.

Note: There is a known issue in IIS 7 giving the following error: "Cannot find the certificate request associated with this certificate file. A certificate request must be completed on the computer where it was created." You may also receive a message stating "ASN1 bad tag value met". If this is the same server that you generated the CSR on then, in most cases, the certificate is actually installed. Simply cancel the dialog and press "F5" to refresh the list of server certificates. If the new certificate is now in the list, you can continue with the next step. If it is not in the list, you will need to reissue your certificate using a new CSR (see our CSR creation instructions for IIS 7). After creating a new CSR, login to your Comodo account and click the 'replace' button for your certificate.

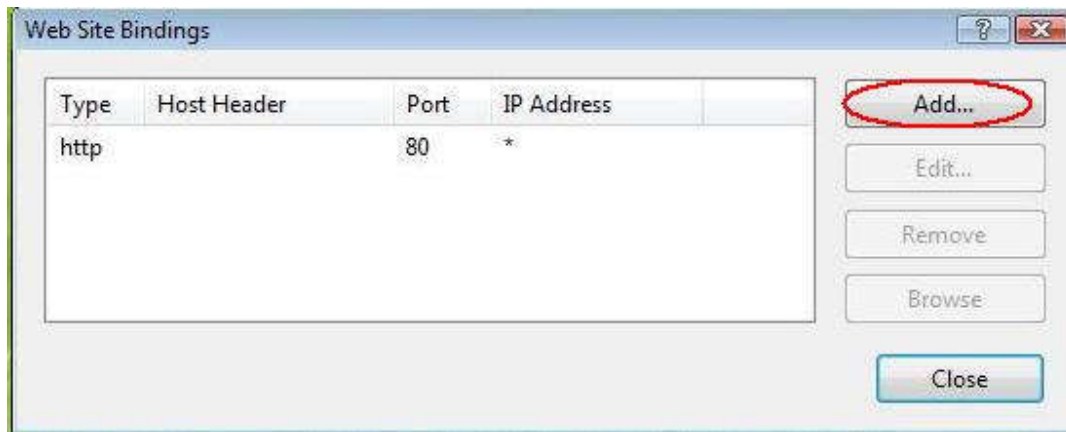
### **Assign to Website**

1. Navigate back to the root of the appropriate website. The center of the window should say "Default Website Home" or whatever the name of the website is.
2. Select 'Bindings' from the 'Edit Site' sub menu.

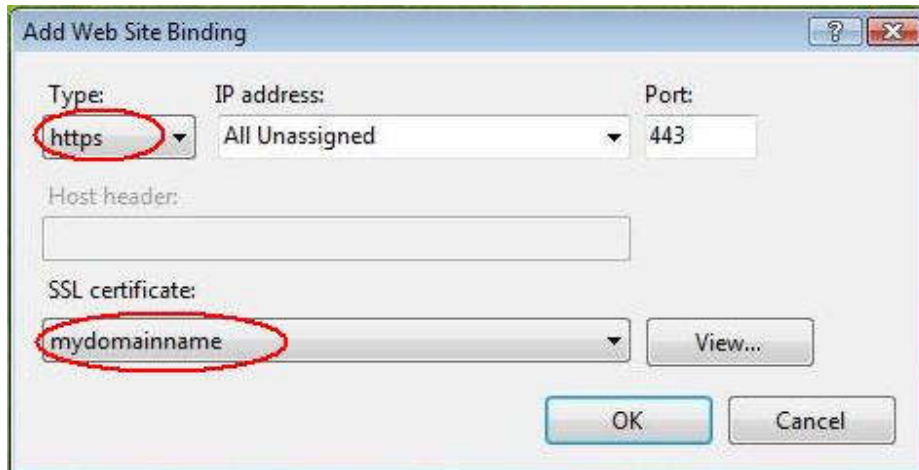




3. Add Port 443



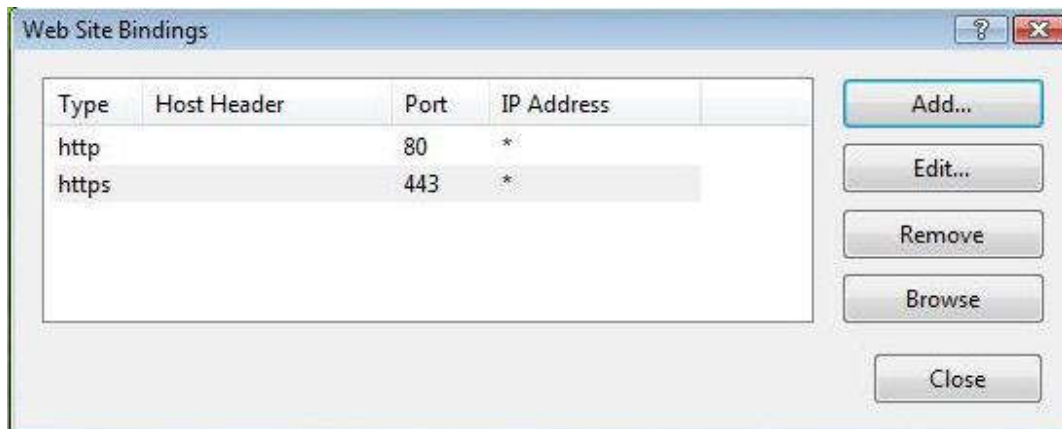
In the 'Site Bindings' window, click 'Add'. This will open the 'Add Site Binding' window.



Under '**Type**' choose **https**. The IP address should be the **IP address of the site** or **All Unassigned**, and the port over which traffic will be secured by SSL is usually **443**. The '**SSL Certificate**' field should specify the certificate that was installed using the above steps.

Click 'OK' to save changes.

**Note: There may already be an 'https' entry in this area. If so, click 'https' to highlight it. Then click 'Edit' and in the 'SSL certificate' area select the friendly name that was generated earlier. Click 'OK' to save changes.**



Click 'OK' on the 'Web Site Bindings' Window to complete the install.

**Important: You must now restart IIS / the website to complete the install of the certificate.**

To enable your SSL certificate for use on other Windows servers, see our [PFX export instructions](#) for help.